

Instructions for Designers when setting up jobs for Digital Cutting with precise registration required.

Digital Cutters have changed forme cutting...

No more expensive formes, no delays, from design to cut sample in a matter of minutes.

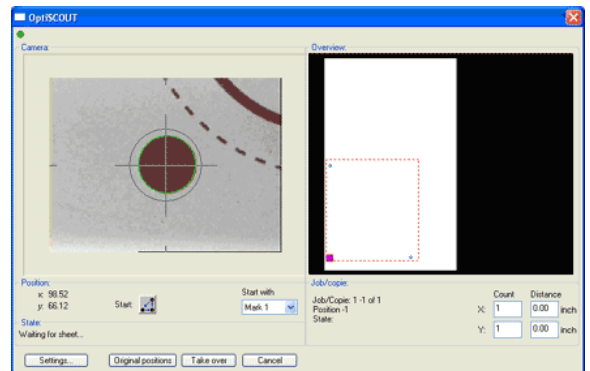
This is the machine that does the cutting.
It has an automatic sheet feeder which positions the print into place by conveyor & suction.
This alone is not an accurate registration process.



To ensure precise registration the cut head utilises a camera registration system.

This system searches for "dots" on the print (outside the finished print area).

The whole procedure happens in a split second every time a sheet is positioned on the bed and is accurate enough to split a 0.2mm keyline if required.



This technology is good enough to make on-the-fly adjustments if there has been any stock expansion or shrinkage after the printing process.

What we need from the Designer...

- 2 files

- 1 pdf file for the print job.

This file will NOT have any visible cut lines as they may actually print on the job. This file also needs 6mm(Dia) dots placed outside the image area. Not many are needed, a min of 3 would be good though.

- 1 ai or eps file for the digital cutting.

This file will have the "dots" and the cut line. The print layer can be on the file but it will not be used (due to missing fonts, links, etc.). IF there are multiple processes (ie. score & cut) then please place them in different layers.

Layer Example: Print

Regdot (contains "dots")

Score

Cut

Video
marks



IMPORTANT NOTE:
Our cutter sees "dashed lines" as "solid lines".
If you need dashed (perfed) lines then they MUST be created as smaller separate lines.